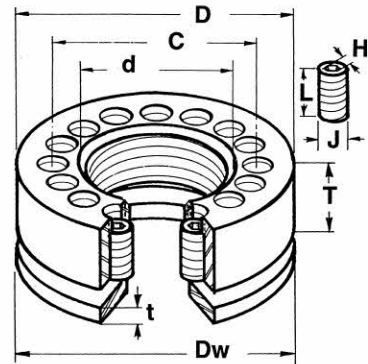


Part No	Nominal Thread d In	O.D. D In	Body Thick T In	B.C. C In	OAL L In	Jackbolts No Jb n	Size J in	Hex H In	Washer O.D. Dw In	Thick t In	Standard Pre-Load Moly Lb	Jb Torq Lbft	Wt. Lb
SJX-075-.../w	3/4	1.70	.70	1.19	.63	4	5/16	5/32	1.63	.13	18120	7.7	.4
SJX-087-.../w	7/8	1.84	.70	1.31	.63	6	5/16	5/32	1.75	.13	25140	7.2	.5
SJX-100-.../w	1	2.10	.70	1.44	.63	8	5/16	5/32	2.00	.19	33060	7.1	.6
SJX-112-.../w	1-1/8	2.34	.90	1.65	.88	6	3/8	3/16	2.13	.19	43680	14	.9
SJX-125-.../w	1-1/4	2.47	.95	1.78	.88	8	3/8	3/16	2.38	.19	55740	14	1.1
SJX-137-.../w	1-3/8	2.72	.95	1.90	.88	10	3/8	3/16	2.50	.19	69300	14	1.3
SJX-150-.../w	1-1/2	3.20	1.20	2.20	1	8	1/2	1/4	2.75	.19	84000	27	2.3
SJX-162-.../w	1-5/8	3.45	1.20	2.33	1	8	1/2	1/4	2.88	.19	100800	33	2.7
SJX-175-.../w	1-3/4	3.59	1.20	2.45	1	10	1/2	1/4	3.13	.25	118800	31	2.8
SJX-187-.../w	1-7/8	3.72	1.30	2.58	1	12	1/2	1/4	3.50	.25	138000	30	3.2
SJX-200-.../w	2	4.20	1.50	2.88	1.25	8	5/8	5/16	3.72	.25	159000	64	4.9
SJX-225-.../w	2-1/4	4.70	1.50	3.13	1.25	10	5/8	5/16	4.00	.25	205200	66	6.1
SJX-250-.../w	2-1/2	4.95	1.65	3.38	1.50	12	5/8	5/16	4.50	.31	257400	69	7.1
SJX-275-.../w	2-3/4	5.70	1.80	3.80	1.75	12	3/4	3/8	4.75	.31	315600	107	11
SJX-300-.../w	3	6.20	2.15	4.23	2	12	7/8	1/2	5.25	.38	379200	137	15
SJX-325-.../w	3-1/4	6.70	2.15	4.48	2	12	7/8	1/2	5.50	.38	449400	162	17
SJX-350-.../w	3-1/2	6.95	2.30	4.73	2	12	7/8	1/2	5.75	.38	511875	185	19
SJX-375-.../w	3-3/4	7.20	2.50	4.98	2	14	7/8	1/2	6.00	.38	606600	188	22
SJX-400-.../w	4	7.45	3.10	5.40	3	12	1	9/16	6.65	.38	694200	289	29
SJX-425-.../w	4-1/4	7.95	3.10	5.65	3	14	1	9/16	6.90	.38	787200	281	33
SJX-450-.../w	4-1/2	8.20	3.10	5.90	3	14	1	9/16	7.40	.38	775950	277	34
SJX-475-.../w	4-3/4	8.45	3.25	6.15	3	16	1	9/16	7.90	.38	903375	282	37
SJX-500-.../w	5	8.45	3.55	6.40	3	16	1	9/16	7.90	.38	904500	282	39
SJX-525-.../w	5-1/4	8.70	3.60	6.65	3	16	1	9/16	8.40	.50	883050	275	41
SJX-550-.../w	5-1/2	8.95	3.70	6.90	3	18	1	9/16	8.40	.50	996150	276	43
SJX-575-.../w	5-3/4	9.45	3.75	7.15	3	18	1	9/16	9.40	.50	1010625	280	48
SJX-600-.../w	6	9.45	3.75	7.40	3	18	1	9/16	9.40	.50	1005000	279	47

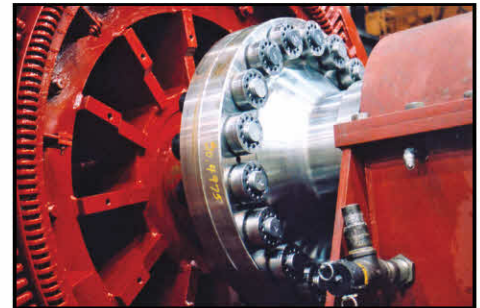


SJX Jamnuts are used for applications where limited headroom and/or limited thread engagement are required. On request, Jamnuts are available with Superbolt's patented captive set screws.

**APPLICATIONS:** Hydraulic cylinders, shaft mounts, pipe flanges, and inaccessible places.

Metric	mm	mm	mm	mm	mm	n	mm	mm	mm	mm	Lb	Lbft	Lb
SJX-M20-.../w	M20	43	18	31	16	4	M8	4	41	3.3	20160	8.8	.4
SJX-M24-.../w	M24	50	18	35	16	6	M8	4	48	4.8	29100	8.4	.5
SJX-M27-.../w	M27	56	18	38	16	8	M8	4	51	4.8	38280	8.3	.6
SJX-M30-.../w	M30	63	23	44	20	8	M10	5	57	4.8	46800	14	1.1
SJX-M33-.../w	M33	69	23	47	20	10	M10	5	60	4.8	58440	14	1.3
SJX-M36-.../w	M36	75	30	53	25	8	M12	6	67	4.8	68640	25	2.0
SJX-M39-.../w	M39	81	30	56	25	10	M12	6	70	4.8	82680	24	2.3
SJX-M42-.../w	M42	88	30	59	25	10	M12	6	73	4.8	94080	27	2.7
SJX-M45-.../w	M45	91	30	62	25	12	M12	6	80	6.4	111120	27	2.9
SJX-M48-.../w	M48	100	38	70	35	8	M16	8	89	6.4	124920	56	4.4
SJX-M52-.../w	M52	107	38	74	35	10	M16	8	95	6.4	150180	54	4.9
SJX-M56-.../w	M56	113	38	78	35	10	M16	8	95	6.4	173220	62	5.5
SJX-M60-.../w	M60	119	42	82	40	10	M16	8	108	6.4	197520	71	6.7
SJX-M64-.../w	M64	126	42	86	40	12	M16	8	114	8	229440	69	7.4
SJX-M72-.../w	M72	151	46	100	45	12	M20	10	121	8	299640	114	12
SJX-M80-.../w	M80	157	52	108	45	12	M20	10	133	10	379140	144	14
SJX-M90-.../w	M90	177	64	124	60	12	M24	12	152	10	491700	220	22
SJX-M100-.../w	M100	183	76	134	60	14	M24	12	163	10	618600	238	26
SJX-M110-.../w	M110	202	79	144	60	16	M24	12	175	10	741195	249	33
SJX-M120-.../w	M120	208	79	154	60	16	M24	12	188	10	744413	250	34
SJX-M140-.../w	M140	221	91	174	60	18	M24	12	213	13	833490	249	41
SJX-M160-.../w	M160	240	95	194	60	20	M24	12	239	13	932190	251	47

WHEN ORDERING: Replace the three dots (...) with the threads per inch (TPI) or the metric pitch required. Please watch for unusual thread forms. See also "HOW TO ORDER" on page 5.



SJX-250-4 on electric motor coupling.

Part No	Nominal Thread d In	Thrd per Inch	O.D. D In	Body Thick T In	B.C. C In	OAL L In	Setscrews No Jb n	Size J in	Hex H In	Washer O.D. Dw In	Thick t In	Standard Pre-Load Lb	Moly Torq Lbft	Wt. Lb
SMX-802/w	1	8	2.34	.75	1.800	3/4	4	3/8	3/16	2.34	.19	22000	12	1
SMX-803/w	1-1/4	8	2.72	.75	2.100	3/4	6	3/8	3/16	2.72	.19	33000	12	1
SMX-804/w	1-1/4	8	2.72	.75	2.100	3/4	6	3/8	3/16	2.72	.19	33000	12	1
SMX-806/w	1-1/2	8	3.59	1.00	2.800	1	4	1/2	1/4	3.59	.25	37000	26	3
SMX-808/w	2	8	3.72	1.00	3.050	1	6	1/2	1/4	3.72	.25	56000	26	3
SMX-810/w	2-1/4	8	4.47	1.13	3.500	1	4	5/8	5/16	4.47	.25	66000	58	5
SMX-812/w	2-1/2	8	4.72	1.13	3.750	1	6	5/8	5/16	4.72	.25	99000	58	6
SMX-814/w	3	8	5.47	1.25	4.500	1-1/4	8	5/8	5/16	5.47	.25	132000	58	9
SMX-816/w	3-1/4	8	5.97	1.25	5.000	1-1/4	8	5/8	5/16	5.97	.25	132000	58	10
SMX-818/w	3-1/2	8	6.47	1.25	5.500	1-1/4	8	5/8	5/16	6.47	.25	132000	58	12
SMX-820/w	4	8	7.22	1.50	6.250	1-1/2	12	5/8	5/16	7.22	.25	198000	58	18
SMX-824/w	4	8	7.72	1.50	6.750	1-1/2	12	5/8	5/16	7.72	.25	198000	58	20

SMX-050-20/w	1/2	20	1.90	0.38	1.363	3/8	4	5/16	5/32	1.90	.13	7500	3.5	.3
SMX-062-18/w	5/8	18	1.90	0.38	1.363	3/8	4	5/16	5/32	1.90	.13	9000	4.2	.3
SMX-075-10/w	3/4	10	2.09	0.56	1.550	1/2	4	3/8	3/16	2.09	.19	11000	6	.6
SMX-075-14/w	3/4	14	2.09	0.56	1.550	1/2	4	3/8	3/16	2.09	.19	11000	6	.6
SMX-087-12/w	7/8	12	2.22	0.56	1.550	1/2	4	3/8	3/16	2.22	.19	14500	8	.6
SMX-100-12/w	1	12	2.34	0.75	1.800	3/4	4	3/8	3/16	2.34	.19	24000	13	.9
SMX-100-14/w	1	14	2.34	0.75	1.800	3/4	4	3/8	3/16	2.34	.19	24000	13	.9
SMX-175-8/w	1-3/4	8	3.72	0.85	3.050	3/4	6	1/2	1/4	3.72	.25	56000	26	2
SMX-175-12/w	1-3/4	12	3.72	0.85	3.050	3/4	6	1/2	1/4	3.72	.25	56000	26	2
SMX-275-8/w	2-3/4	8	5.97	1.00	5.000	1	8	5/8	5/16	5.97	.25	92000	40	8
SMX-300-8/w	3	8	6.47	1.20	5.500	1	8	5/8	5/16	6.47	.25	132000	58	10

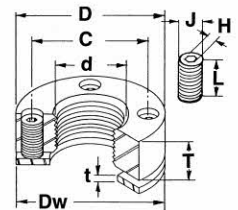
Other Inch Sizes and Metric Sizes available. Call Superbolt® Inc. for Details.

Moly Lubricant (JL-M)  
Operating Temperature:  
-50°F to 500°F

# SMX

SMX Mill Motor Nuts are used to replace standard mill motor armature nuts supplied by electric motor manufacturers.

SMX tensioners are available for most standard motor frame sizes. For sizes not listed, including 400 series frames, contact Superbolt® for further information. Preload matches the hub stress capacity of brake wheels and pulleys.



\*See bottom of page 10 for installation examples.